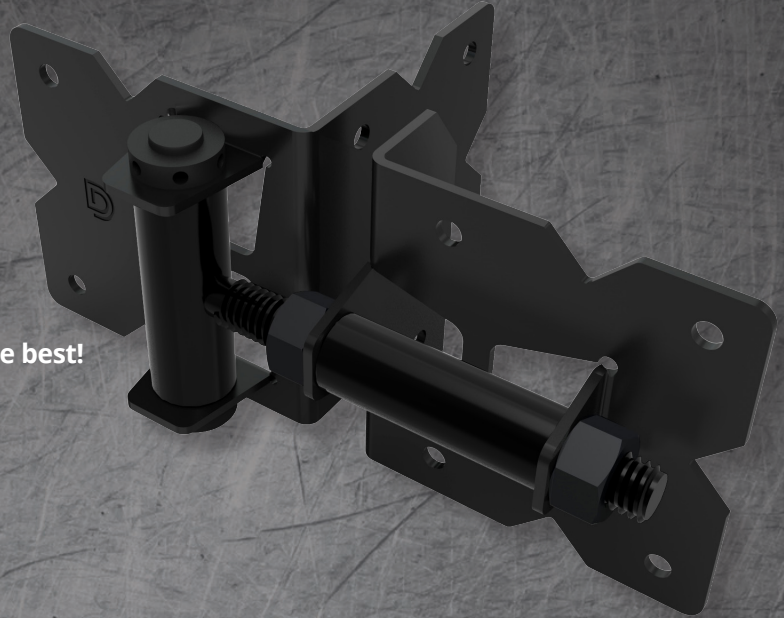


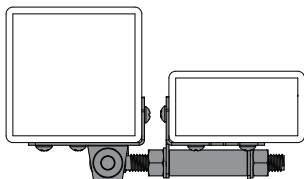


## Fully powder-coated hinges and latches for vinyl gates

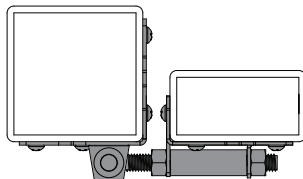


- D&D branded so you know you're getting the best!
- 100% marine-grade powder-coated finish (no unfinished surfaces)
- Self-closing, tension-adjustable hinges
- Regular and Heavy Duty models
- Non-spring versions available
- Standard and Narrow side-fixing legs
- Stainless steel screws + tension-adjustment tool included
- Horizontally adjustable
- Standard and contemporary post latches
- Latches accommodate most padlock sizes (padlock not included)

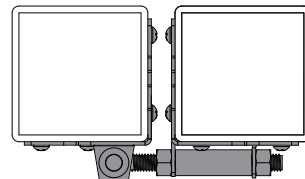
CODE	MODEL / FEATURE	SIDE FIXING LEGS	GAP VARIANCE	COLOR	FASTENERS INCLUDED	SOLD AS
DDSHDNNA	Heavy Duty Hinge – Self-closing, tension adjustable	Narrow to Narrow	$\frac{5}{8}'' - 1 \frac{3}{16}''$ (16 – 30mm)	Black	Self-drilling 410 Stainless Steel	Pair
DDSHDSS	Heavy Duty Hinge – No spring, plain pivoting	Standard to Standard	$\frac{5}{8}'' - 2 \frac{3}{8}''$ (16 – 60mm)	Black	Self-drilling 410 Stainless Steel	Pair
DDSHNNA	Regular Hinge – Self-closing, tension adjustable	Narrow to Narrow	$\frac{3}{8}'' - 1 \frac{3}{16}''$ (16 – 30mm)	Black	Self-drilling 410 Stainless Steel	Pair
DDSHSN	Regular Hinge – No spring, plain pivoting	Standard to Narrow	$\frac{3}{8}'' - 1 \frac{3}{4}''$ (16 – 45mm)	Black	Self-drilling 410 Stainless Steel	Pair
DDSHSNA	Regular Hinge – Self-closing, tension adjustable	Standard to Narrow	$\frac{5}{8}'' - 1 \frac{3}{16}''$ (16 – 30mm)	Black	Self-drilling 410 Stainless Steel	Pair
DDSHSS	Regular hinge – No Spring, plain pivoting	Standard to Standard	$\frac{5}{8}'' - 1 \frac{3}{4}''$ (16 – 45mm)	Black	Self-drilling 410 Stainless Steel	Pair
DDSHNW3A	Regular Hinge – Self-closing, tension adjustable	Narrow to Wrap 2"	$\frac{5}{8}'' - 1 \frac{3}{16}''$ (16 – 30mm)	Black	Self-drilling 410 Stainless Steel	Pair
DDSL2	Standard Post Latch	Standard to Narrow	$\frac{3}{4}'' - 1 \frac{1}{2}''$ (19 – 38mm)	Black	Self-drilling 410 Stainless Steel	Each
DDSLM	Contemporary Post Latch	Standard to Narrow	$\frac{3}{4}'' - 2''$ (19 – 50mm)	Black	Self-drilling 410 Stainless Steel	Each



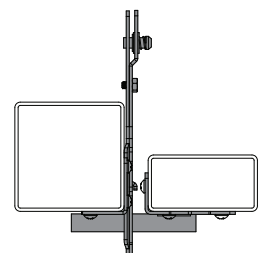
**DDSHNNA**  
Narrow to Narrow



**DDSHSNA**  
Standard to Narrow



**DDSHSS**  
Standard to Standard



**DDSLM**  
Standard to Narrow