

**SUREClose®****CONCEALFit****NEW**

World's Only Hydraulic Concealed Door Closer & Hinge All-In-One Combination



Plain Pivot Hinge



Closer/Hinge Hydraulic Unit



SureClose® ConcealFit - Features

- Hydraulically operated hinge and door closer all-in-one, designed and manufactured by the same company as an integrated system
- Concealed mechanisms for a stylish, clean, distinctive look and burglary resistant
- Secure, safe and quiet operation with no visible moving parts
- Easily installed internally within the door or wall cavity frame
- Easily accessed, adjustable self-closing and self-latching speed valves
- Up to 7 different adjustments to ensure perfect installation
- The innovative choice of Architects, Engineers and Designers
- ADA (disability) compliant

ONE PAIR, CLOSER+HINGE COMBINATION

Maximum Door Weight	220 lb (100 kg)
Maximum Door Width	48" (1220mm)
Maximum Opening Angle	Approx 125°
Final Snap-close Action	12° - 0°



* Warranty conditions vary according to gate or door application and usage.
See full Warranty details and limitations on D&D Technologies' website.

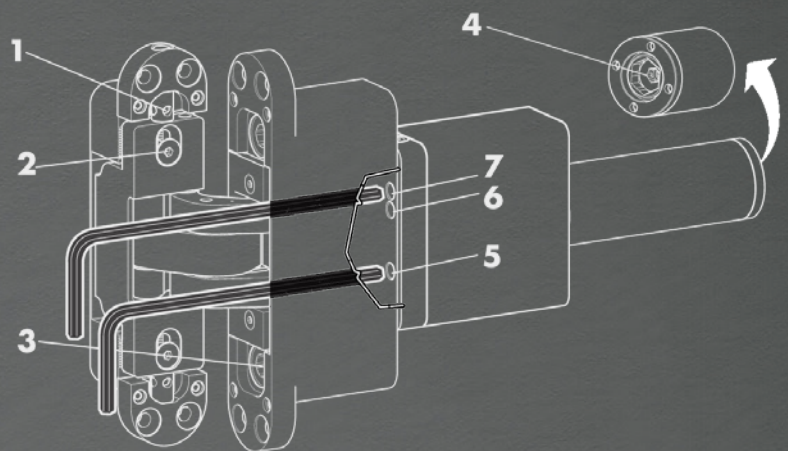
**D&D Technologies**

World's most trusted gate hardware

A stylish, hidden solution residential & com



Closer-Hinge Hydraulic Unit



Plain Pivot Hinge

REF	ADJUSTMENT	UNIT	RANGE
1	Vertical (Door Height)	Both	+/- 0.08" (2mm) with 0.04" (1mm) steps
2	Horizontal (Lateral Door Movement)	Both	+/- 0.05" (1.25mm)
3	Depth and Inclination	Both	Gap between post and door leaf is adjustable from 0.08" (2mm) - 0.24" (6mm)
4	Closing Force	Closer	330lbf-395lbf (1470N-1755N)
5	Closing Speed	Closer	125° to 0°
6	Door Backchecks	Closer	Steps at 60°, 80°, 100° and 125°
7	Latching Speed	Closer	Between 12° - 0°

tion for self-closing Commercial doors

Robust mounting system

- Aluminum, screw-on mounting brackets
- Dress covers included
- Door reinforcement hardware available for steel and fiberglass doors
- Routing templates and jig available for wood door and frame preparation

Powerful, hidden hydraulics... that won't leak

- Hydraulics are concealed internally
- Quiet, controlled, adjustable closing
- Tamper resistant, compact design
- No need to add fluid, no maintenance. EVER.

Performance

- Self-closes doors up to 220 lb (100kg)
- Aluminum Housing with 50-micron thick hard anodizing
- Tested to 1 Million open/close cycles
- Limited 5-Year Warranty

Certified to EN 1634-1 Fire Resistance, UC10C testing in progress
BHMA156.1 (hinge) and BHMA156.4 (hinge/closer) testing in progress



* Warranty conditions vary according to gate or door application and usage. See full Warranty details and limitations on D&D Technologies' website.

Closer-Hinge Hydraulic Unit

77108523



Plain Pivot Hinge

78108513

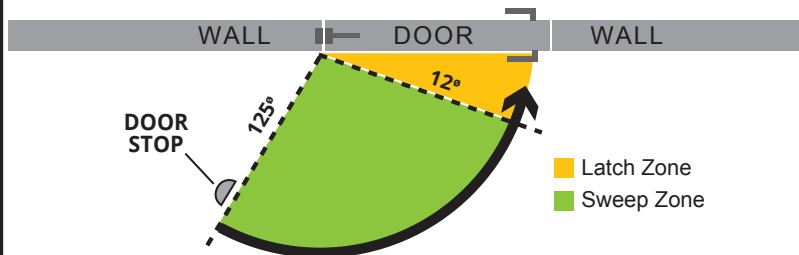


SUREClose®

CONCEALFit

STRONG, SELF-CLOSING PERFORMANCE

Product Code	Description
77108523	Hydraulic Door Closer With a Plain Door Hinge

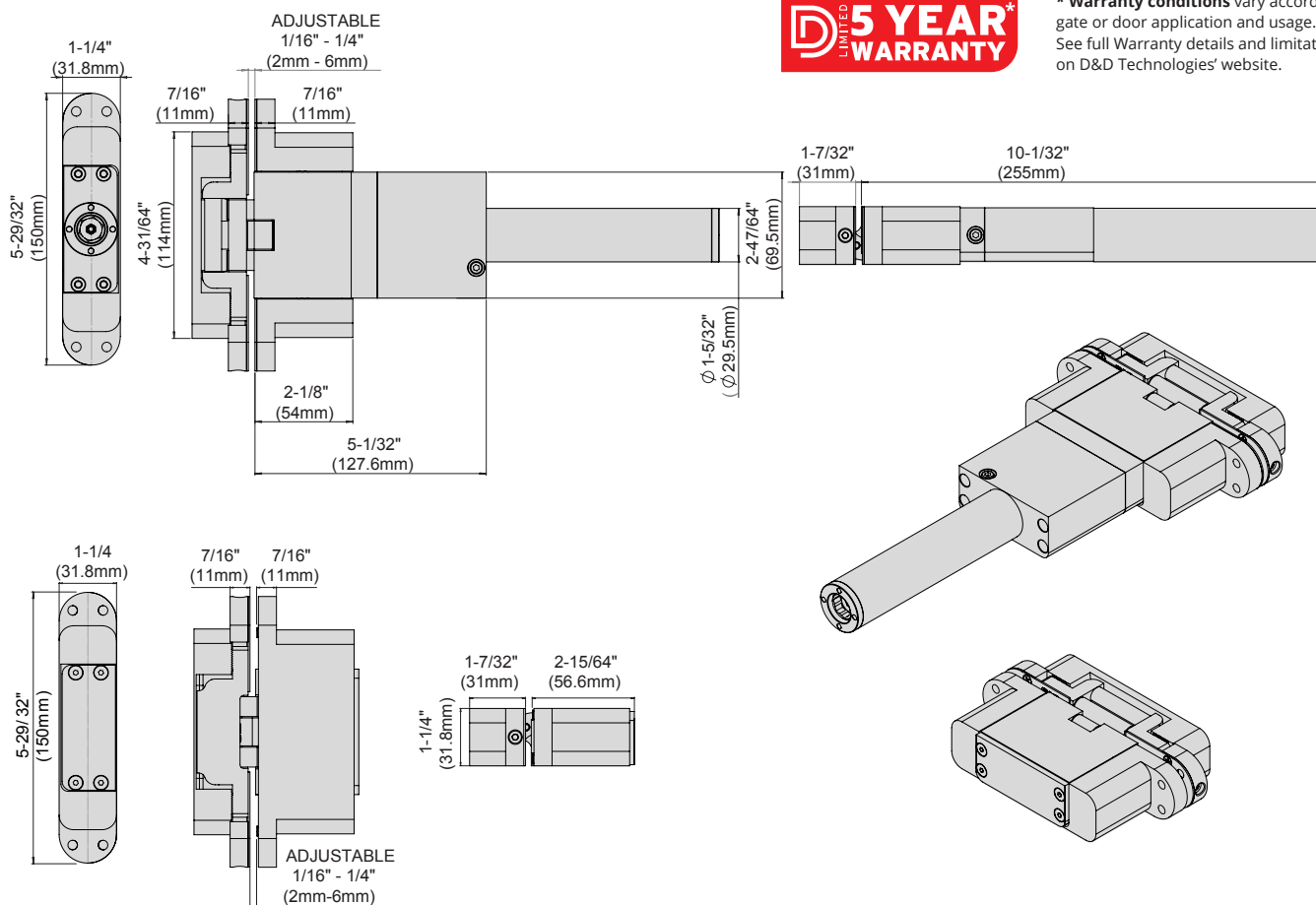


*** CAUTION:** A floor-mounted **DOOR STOP** is required to prevent a door opening beyond 125° (see above diagram). Forcing a door beyond a 125° opening may damage closer and door frame. Failure to install a Door Stop where required may void Warranty.

CODE	PRODUCT DESCRIPTION	TYPE	SELF-CLOSES	MAX ANGLE OPENING	ADJUSTABLE CLOSING SPEED	FINAL LATCHING ACTION	MINIMUM DOOR THICKNESS	MAXIMUM DOOR WIDTH	MAX. SELF-CLOSING WEIGHT
77108523	SureClose® CONCEALFIT KIT (Hinge/Closer + Hinge Only)	Hinge/Closer + Hinge	125° - 0°	125°	Yes	Yes (12° - 0)	1.6" (40mm)	48" (1220mm)	220 lb (100kg)
78108513	Hinge (Single unit)	Hinge	N/A	125°	No	No	1.6" (40mm)	48" (1220mm)	220 lb (100kg)



*** Warranty conditions** vary according to gate or door application and usage. See full Warranty details and limitations on D&D Technologies' website.



Copyright © 2019 D&D Technologies | MKT-136-0519